



Linkus User Guide

iPhone Edition 1.2.6



Revised: March 24, 2017

CONTENTS

INTRODUCTION.....	4
About This Guide.....	4
Standard Telephone Features	4
Specifications	4
LINKUS SEVER SETTINGS.....	5
Installing and Enabling Linkus.....	5
Assigning Linkus Login Information.....	6
Port Forwarding and NAT Settings.....	8
GETTING STARTED	10
Installing Linkus on iPhone.....	10
iPhone Network Settings	10
Logging in Linkus	10
Personal Information	13
ALLING WITH LINKUS	14
Interaction between Linkus & Native Phone.....	14
Making a Call from Extension List.....	15
Making a Call from Contacts	17
Making a Call from the Dial Pad/Call History	18
Handling an Established Call	19
Attended Transfer.....	19
Blind Transfer	21
Number Rewriting.....	22
CONFERENCE.....	25
Adding a New Conference	26
During a Conference	27
Resuming a Conference.....	30
CONTACTS	31
Extensions.....	31
Contacts	32
CALL HISTORY.....	33
Creating a Contact from History	34
VOICEMAIL & RECORDING.....	35
SETTINGS	36

Call Options.....	36
Audio Options.....	37
Advanced Options	37
Password Management.....	37

INTRODUCTION

Linkus is a VoIP Mobile Client coordinated with Yeastar S-Series VoIP PBX. Linkus makes your mobile phone an office extension and links you and your colleagues and customers anywhere anytime. Make and receive calls through corporate phone network to slash call costs and enhance efficiency with consistent in-office experience.

About This Guide

This guide introduces how to install and configure Linkus on S-Series IPPBX and how to use Linkus client. This guide is for both the S-Series IPPBX administrator and the Linkus client users.

This guide is based on Linkus mobile client version 1.2.6 and Linkus server version 1.2.5.

If you are a Linkus client user, you can skip the chapter ***Linkus Sever Settings***.

Standard Telephone Features

- Call Display
- Speakerphone and Mute
- Hold & Resume
- Call Waiting
- Do Not Disturb
- Call History
- Access to S-Series Directory
- Native Contacts Integration
- Contact Avatars
- Audio Call Conference
- One-touch Recording
- Call Transfer

Specifications

- iPhone Requirement: iOS 8.0 or later
- Supports CallKit feature on iOS 10
- PBX Requirement: Yeastar S-Series PBX firmware version 30.2.0.27 or later
- Network: 2G/3G/4G or Wi-Fi
- Protocol: SIP RFC3261
- Codec: iLBC
- Network Protocol: TCP/IP/UDP, RTP/SRTP/RTCP, HTTP/HTTPS
- DTMF: Inband, RFC4733 (RFC2833), Info

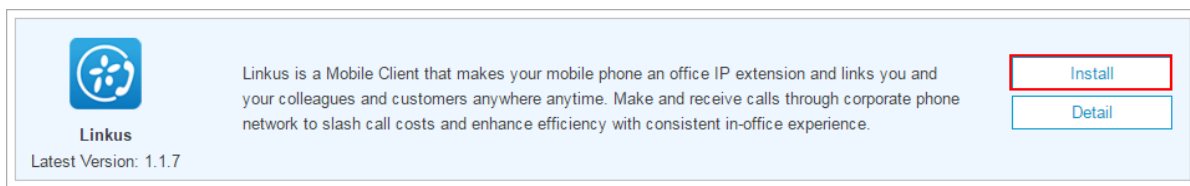
LINKUS SEVER SETTINGS

This chapter is for Linkus administrator, introducing how to configure Linkus server on Yeastar S-Series IPPBX. If you are a Linkus client user, you can skip this chapter.

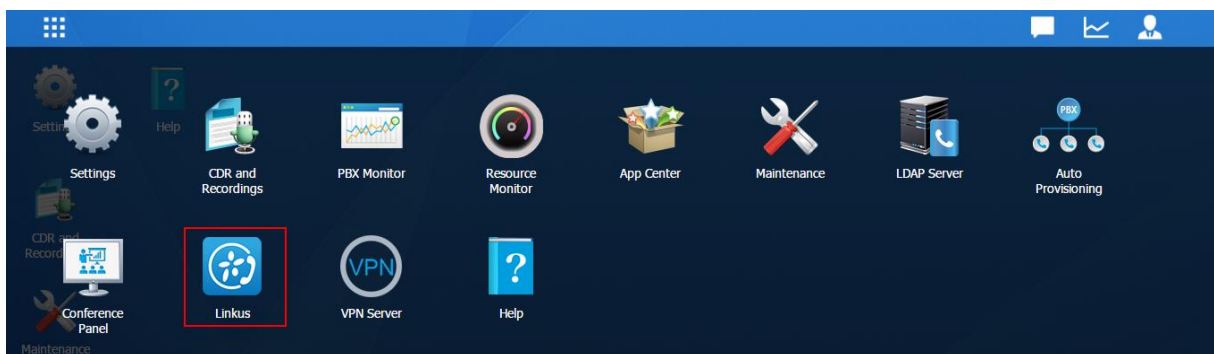
Installing and Enabling Linkus

Linkus is supported on Yeastar S-Series PBX firmware version 30.2.0.27 or later. Please upgrade the PBX firmware before using Linkus.

Step1. Log in S-Series PBX web user interface, go to App Center and install Linkus.

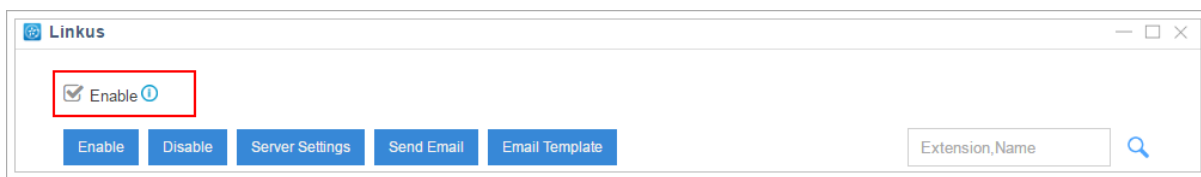


Step2. Click **Main Menu**, you can see the installed Linkus App.



Step3. Click Linkus icon to configure it.

Step4. Check **Enable** box to enable Linkus feature on the PBX.



Step5. Select extensions, and click **Enable**. The extension users would be allowed to log in Linkus on their phones.

Note:

- For Linkus security, the extension users' default **User Password** MUST be changed, or the system will not allow you to enable Linkus for the extension users.
- We suggest that you set up robust passwords that include a combination of numerics, upper letters, and lowercase letters.

The screenshot shows the Linkus interface with a table of extensions. A red box highlights the 'Enable' button in the top navigation bar and the checkboxes in the first column of the table. The table has columns for Extension, Name, Email Address, and Enable Linkus Client For Users.

Extension	Name	Email Address	Enable Linkus Client For Users
6222	Jin		<input type="checkbox"/>
6242	Ramon		<input type="checkbox"/>
6243	Pixy	pixy@yeastar.com	<input type="checkbox"/>
6244	Federico		<input type="checkbox"/>
6245	蔡双莲		<input type="checkbox"/>
6250	Nikita	nikita@yeastar.com	<input type="checkbox"/>
6252	Tracy		<input type="checkbox"/>
6258	陈志辉		<input type="checkbox"/>
6262	6262		<input type="checkbox"/>
6263	Sway - 洪诗伟	hsw@yeastar.com	<input type="checkbox"/>

Step6. Click **Save** and **Apply**.

Assigning Linkus Login Information

Yeastar S-Series IPPBX provides an easy way to help the administrator to assign Linkus login information to extension users. Follow the steps below to assign Linkus login information.

Step1. Click **Sever Settings** to configure the Linkus server, the system will generate QR code and login link using the server settings.

The screenshot shows the 'Server Settings' dialog box with the following fields:

- Local Hostname/IP: 192.168.6.202
- Local Port: 8111
- External Hostname/IP: (empty)
- External Port: (empty)
- SIP Remote Registration Port: (empty)

Buttons: Save, Cancel

- **Local Hostname/IP:** the PBX's local hostname or IP address.
- **Local Port:** Linkus local port, the default port is 8111.
- **External Hostname/IP:** the PBX's external hostname or IP address.
- **External Port:** the forwarded Linkus port.
- **SIP Remote Registration Port:** set the port according to your PBX's network settings:
 - i. If Linkus remote registration is through the PBX's network interface which is configured with a private IP, and the PBX is behind a router, you need to forward SIP registration port (default 5060) on your router, and enter the forwarded port here
 - ii. If Linkus remote registration is through the PBX's network interface which is configured with a public IP, then enter the local SIP registration port (default 5060) here.
 - iii. If the PBX is connected to a VPN network, you don't need to do port forwarding and enter the local SIP registration port (default 5060) here.

Step2. Click **Email Template** to modify the email subject and contents. When you finish the configuration, click **Save**.

Edit Email Template

Template Variables: TAB: \t
Line break: \n
Receiver's name: \${LI_NAME}
Receiver's extension number: \${LI_NUMBER}
QR Code: \${LI_QR}
Link: \${LI_LINK}

Subject: Login Linkus Mobile Client

Email Content: Hello \${LI_NAME}, Linkus Mobile Client has been enabled on your extension \${LI_NUMBER}. You can scan the QR code or click the link below to quickly log in Linkus Mobile Client. \${LI_QR}Link: \${LI_LINK} Important: the QR code and link are only valid in 30 minutes and can only be used once. If you not installed Linkus on your mobile phone, you can download it from App Store or Google Play.

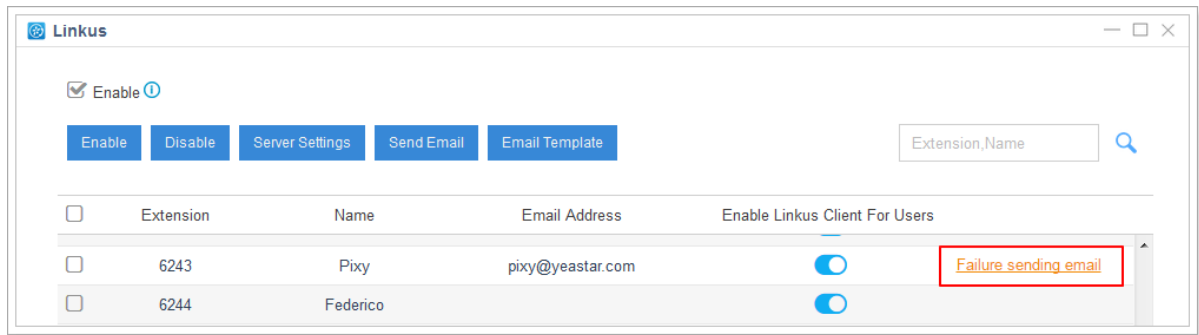
Save Cancel

Step3. Select the desired extensions, and click **Send Email**.

Note:

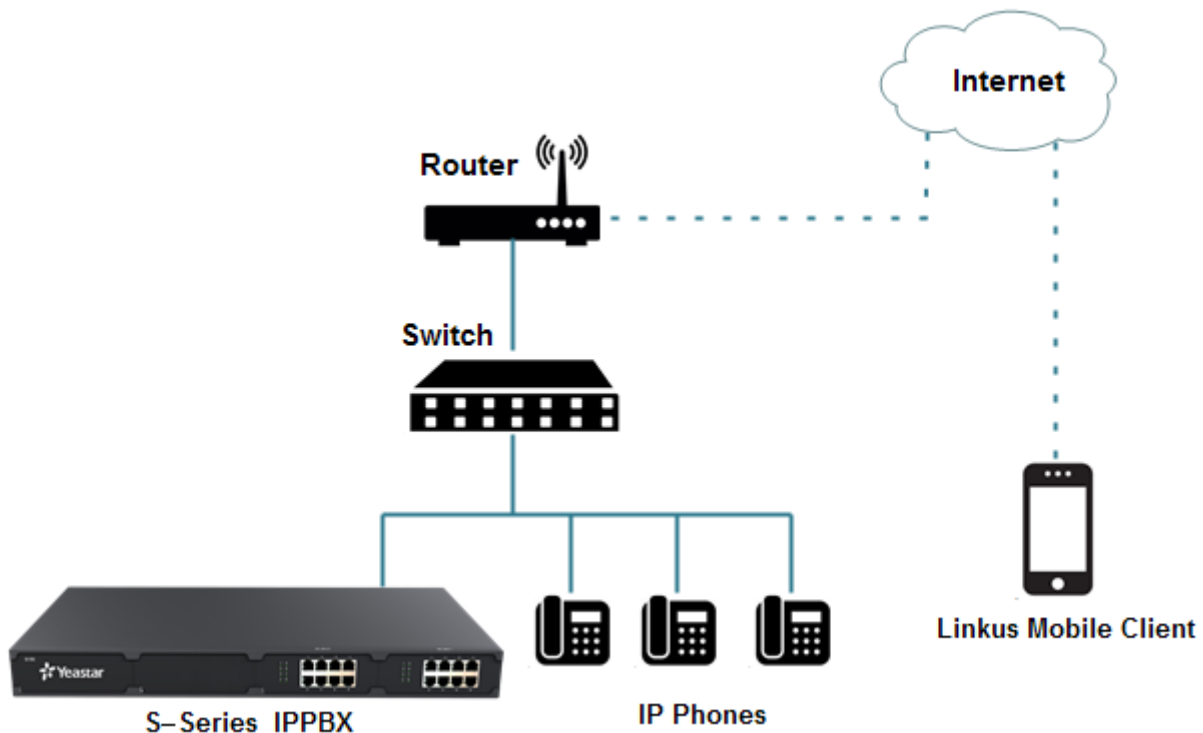
- Please make sure the selected extensions have email address tied and have enabled Linkus.

Step4. If the system failed to send emails, you can see the email failure status on the Linkus settings page. Click **Failure sending email** to resend the email or ignore the status.



Port Forwarding and NAT Settings

NAT enables private IP internetworks that use nonregistered IP addresses to connect to the Internet. If Linkus communicates with the S-Series IPPBX through the network interface which is configured with a private IP, and the IPPBX is behind a router, you need to do port forwarding and configure NAT on your S-Series IPPBX.



In this situation, you need to forward the following ports to make Linkus work properly in remote network.

Port	Default Value	Configuration Path
Linkus Service Port	8111	S-Series > Linkus > Port Settings
SIP UDP Port	5060	S-Series > Settings > PBX > General > SIP
RTP Ports	10000-12000	S-Series > Settings > PBX > General > SIP

Go to **S-Series > Settings > PBX > General > SIP > NAT** to configure NAT settings.

Step1. Choose a **NAT Type**.

Step2. Enter the external IP address or domain, and enter the forwarded SIP UDP port.

Step3. Enter local network identification.

Step4. Set **NAT Mode** to “Yes”.

Step5. Click **Save** and **Apply**.

GETTING STARTED

Installing Linkus on iPhone

The Linkus App must run on iPhone iOS 8.0 or later. Users could download the application from QR code scan or search “Yeastar” in the Apple Store to download the application.



Scan and Download
from App Store


iPhone Network Settings

Before using Linkus, please make sure that the network settings on your iPhone are configured correctly. You can choose Wi-Fi network or cellular data for your iPhone. Enabling both Wi-Fi and cellular data is a better choice that Linkus will keep working through the cellular data if you are not in the Wi-Fi zone.

Note:

- We strongly recommend that you perform your initial setup from within a “known” network, such as in your company or in your home, but not in a public network such as an internet café.

Logging in Linkus

Once the Linkus has been downloaded and installed on your iPhone, you can see the icon  on your iPhone. Tap the icon to launch Linkus.

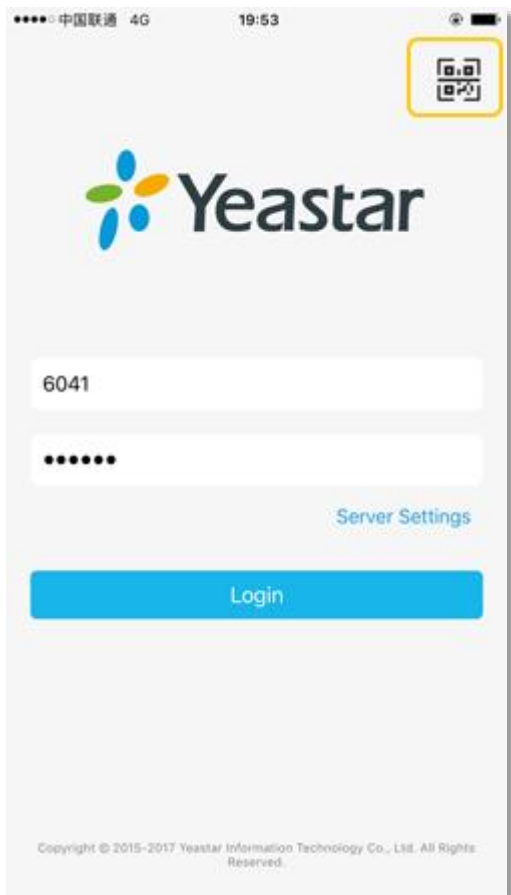
Note:

- For the first-time login, please allow Linkus to send notifications when the application is in the background.
- For the first-time login, you need to confirm whether allow Linkus to access Contacts from your phone. If you allow this action, Linkus will continually synchronize with your native contacts.

You have three ways to log in Linkus mobile client.

➤ **Scanning QR Code**

If you have received a Linkus Login email on your computer, you can choose to log in Linkus via the QR code. Tap the QR code button on Linkus login page, and scan the QR code to log in.



➤ **Copying Login Link**

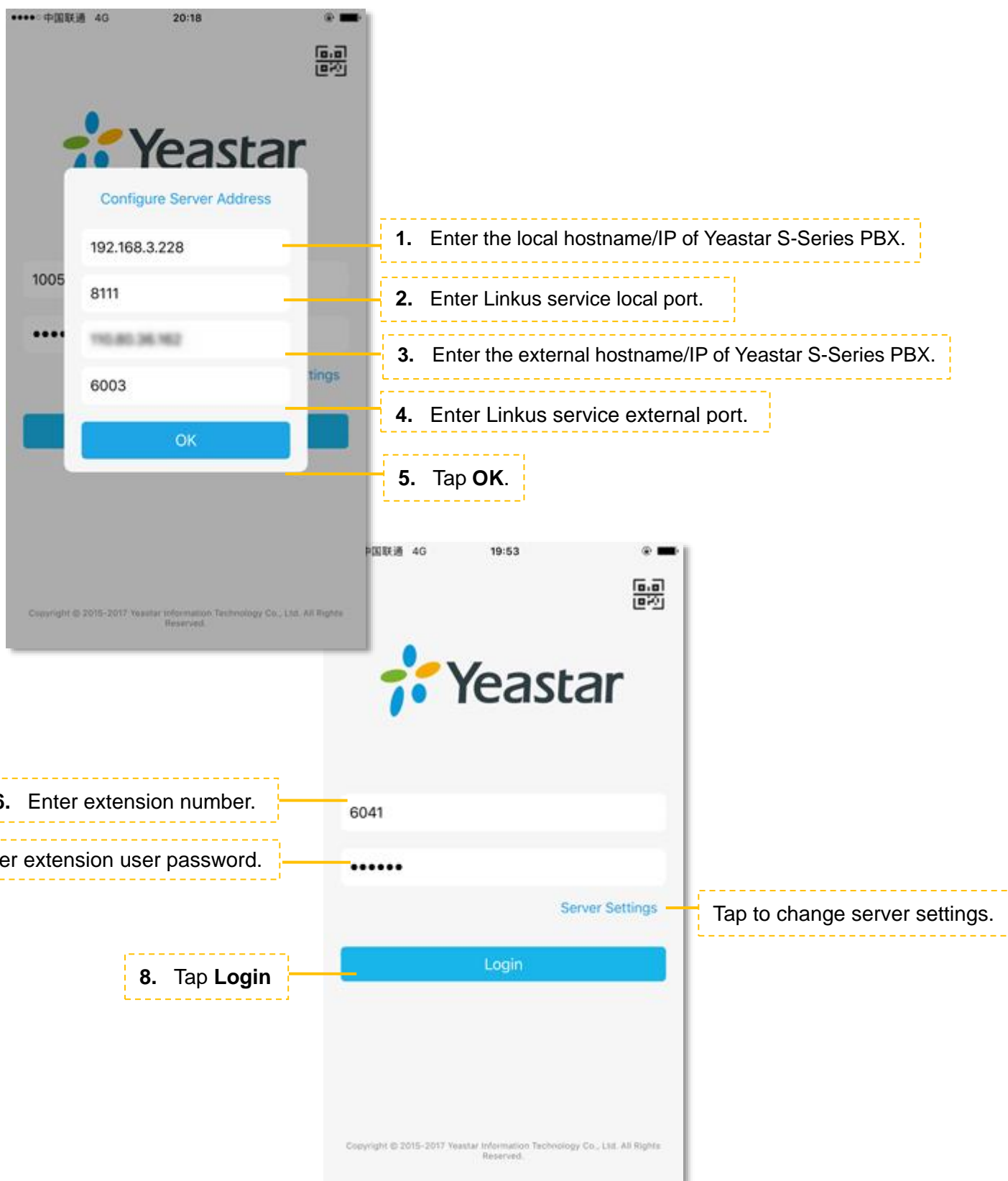
If you have received a Linkus Login email on your mobile phone, you can choose to log in Linkus via the link. Copy the link, then open Linkus mobile client, tap **OK** to log in.

Note:


- The QR code and link are only valid in 30 minutes and can only be used once.

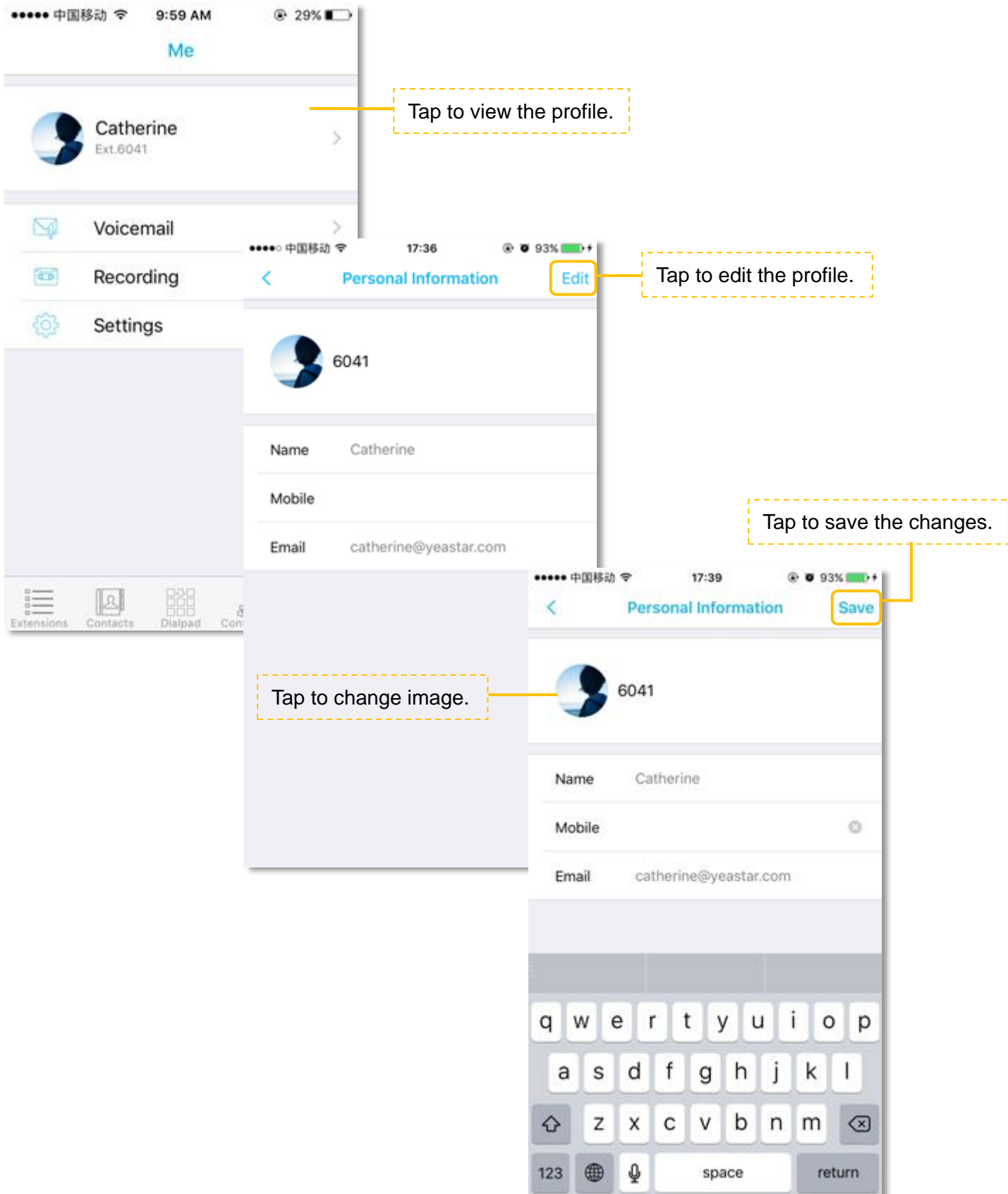
➤ Logging in Manually

You can also tap **Server Settings** on the Linkus mobile client login page, and enter the server IP address and port manually to log in.



Personal Information

After login, you can edit your profile by tapping  on the bottom of the screen.



CALLING WITH LINKUS

Interaction between Linkus & Native Phone

Outgoing Calls

- You can make a native call regardless of the state of Linkus.
- Calls from Linkus can be made if not on a native call.

Incoming Calls

- An incoming call to your extension will ring Linkus if you are not on a native call.

Established Calls

- If you accept an incoming native call, you could not handle the call by Linkus.
- If you make a call from Linkus, you can record the call or transfer the call on Linkus.

CallKit Integration (for iOS 10)

- Prior to CallKit, incoming calls on Linkus come through only as simple banner notifications. But now, with CallKit, incoming Linkus calls will show up just like regular calls.

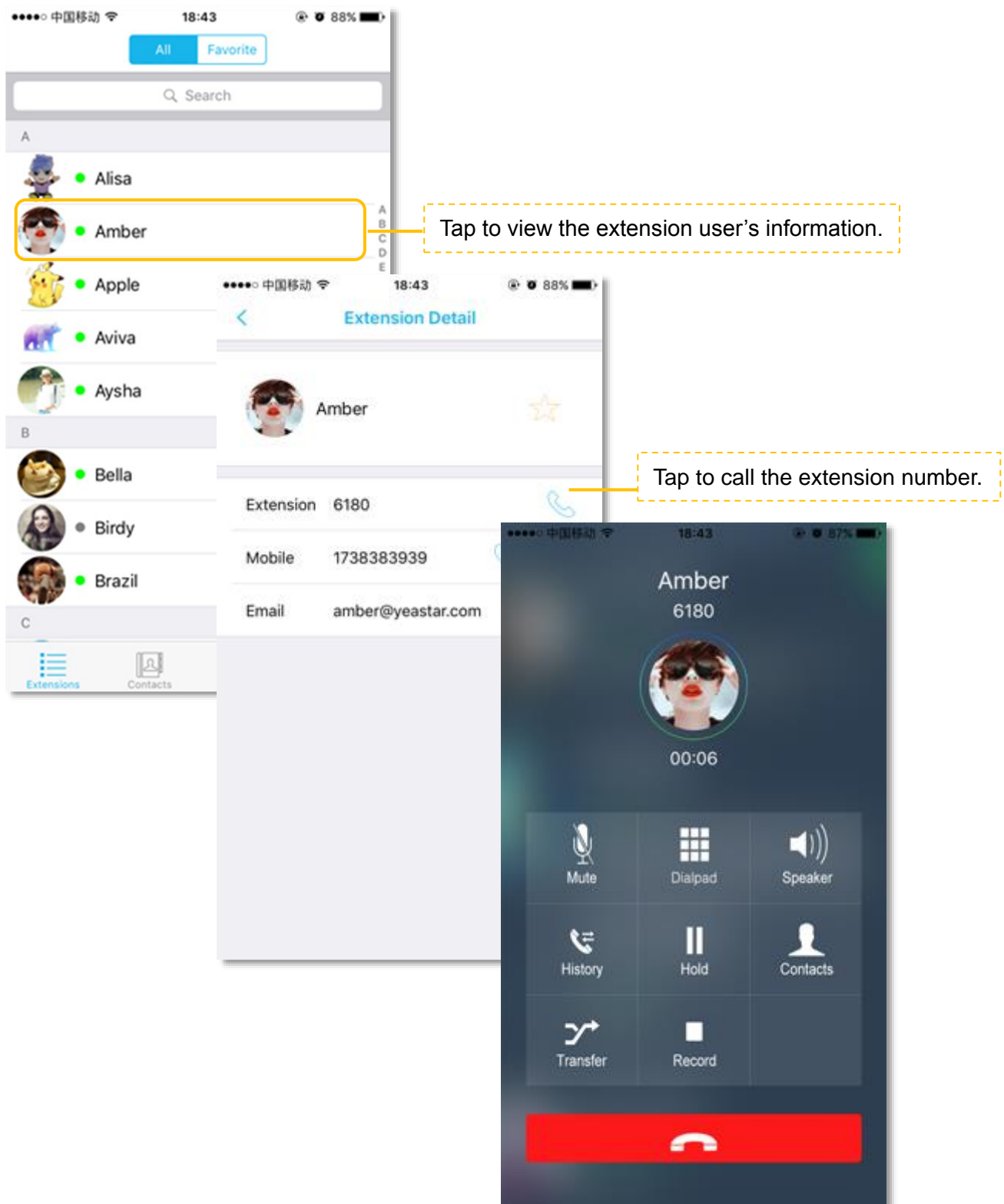


Making a Call from Extension List

Access S-Series PBX extension list by tapping  at the bottom of the screen.

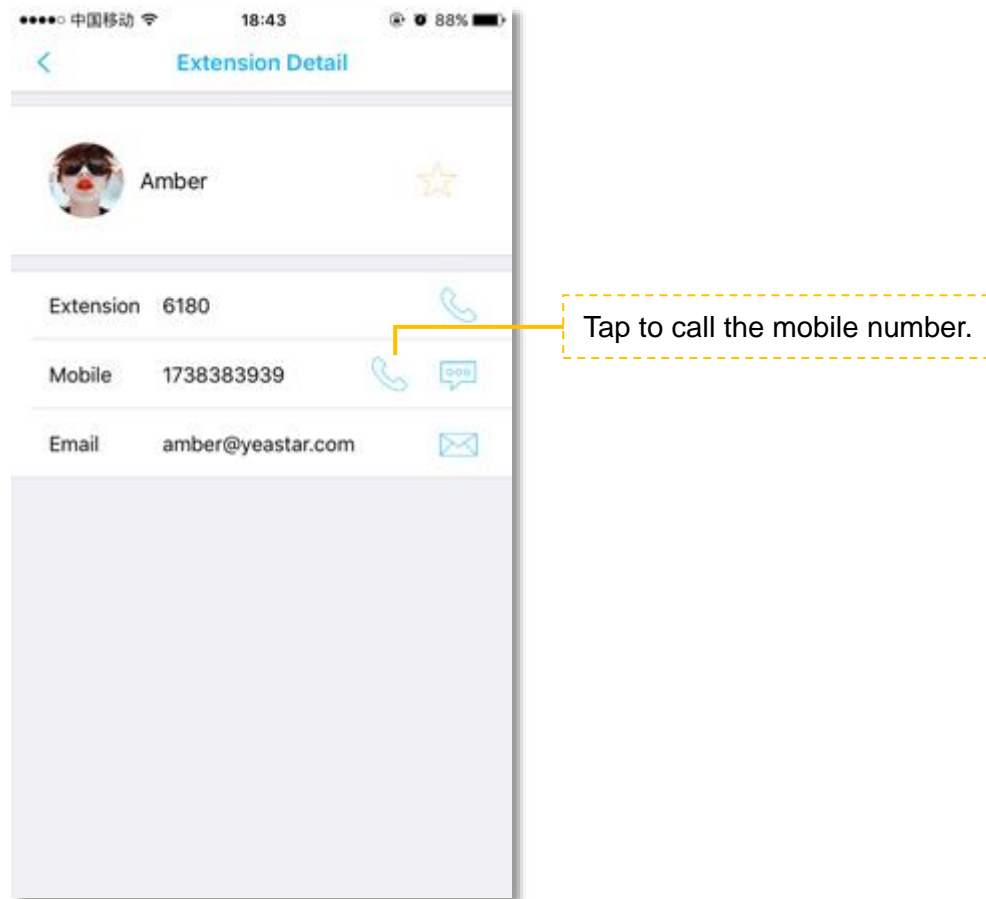
- **Call Extension Number**

Choose the extension number and tap  to call the extension number directly.




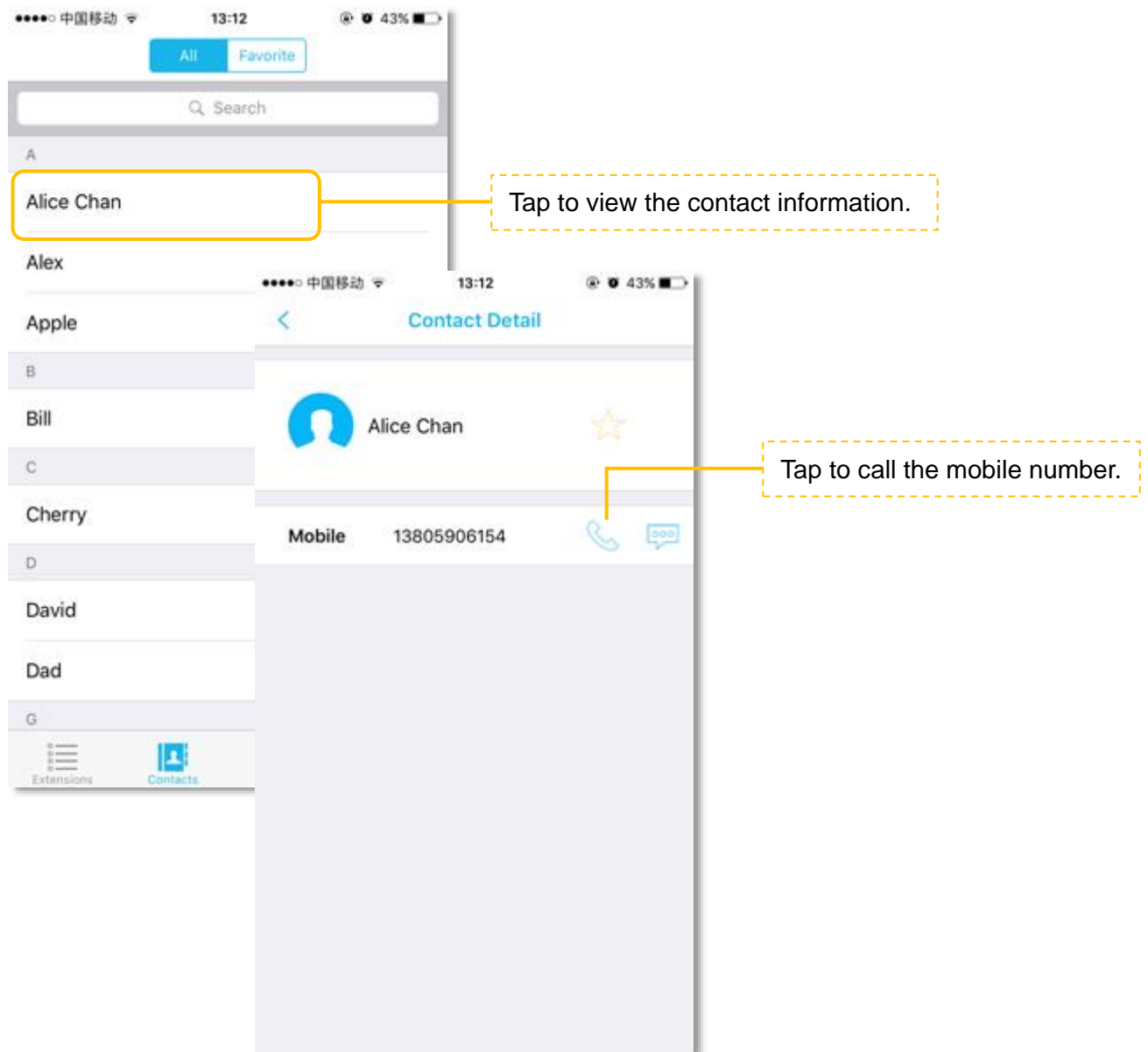
- **Call Mobile Number**

Users can also call a person's mobile phone on Linkus, the bill is charged to S-Series PBX. The number you want to call should match outbound routes in S-Series PBX, or the call will fail.






Making a Call from Contacts

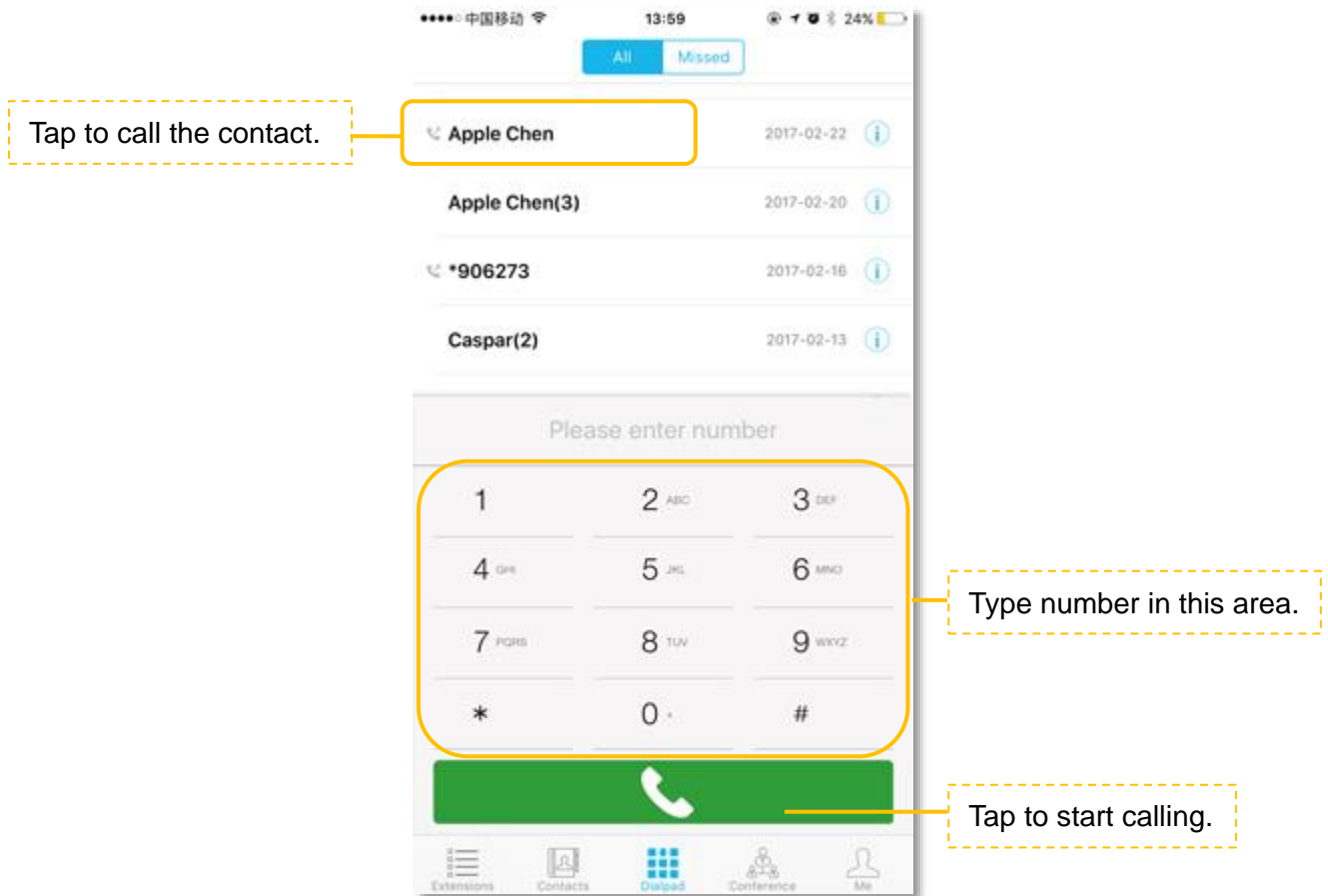
Access Linkus **Contacts** by tapping  at the bottom of the screen. The contacts are continually synchronized with your native contacts.



Making a Call from the Dial Pad/Call History

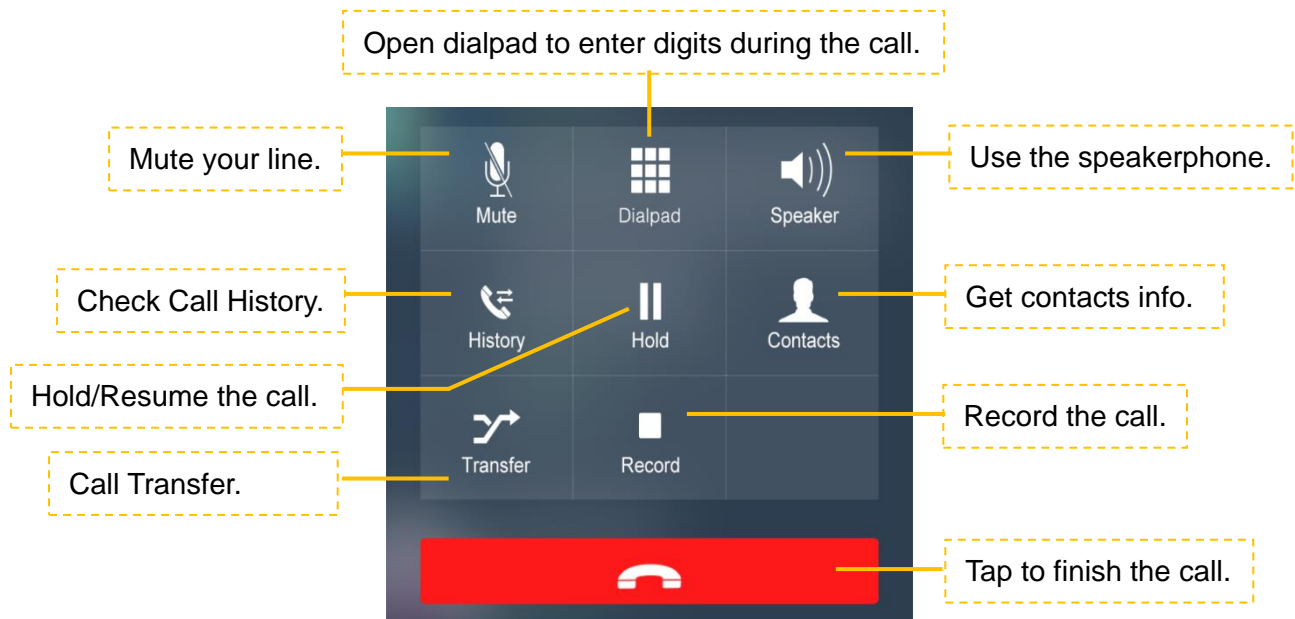
Tap  at the bottom of the screen, a dial pad shows up and displays all the call history and missed calls. Tap  to hide the dial pad, then you can check all the call history. Tap  to show the dial pad.

Enter a number on the dial pad and tap  to call or you can call from the history.




Handling an Established Call




When you are on a call, the screen shows several call options.

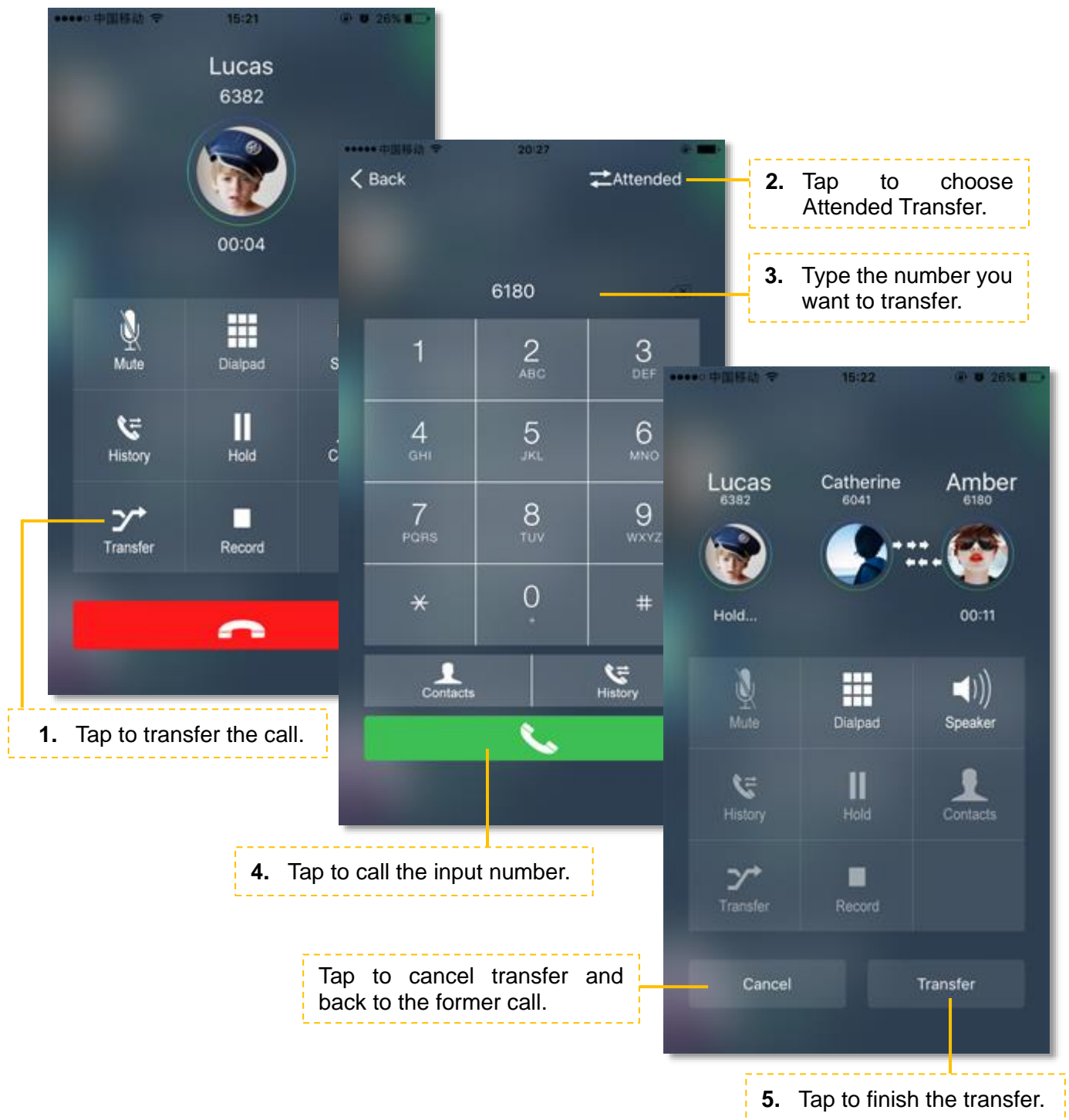


Attended Transfer


Tap  during the call, you can make an attended transfer, then dials a number and talks to the person who has picked up the call before transferring the caller over to him/her.

User A and User B are on the phone, User B on Linkus wants to transfer the call the User C.



1. Tap , the screen will be switched to the Transfer Screen.
2. Switch the transfer type to “Attended”.
3. Input User C’s number on the screen then tap  to call User C.
4. User B talks to User C, the call between A and B is put on hold.
5. User B taps  to finish the call between B and C.
6. The call between A and C is established once B ends the call.

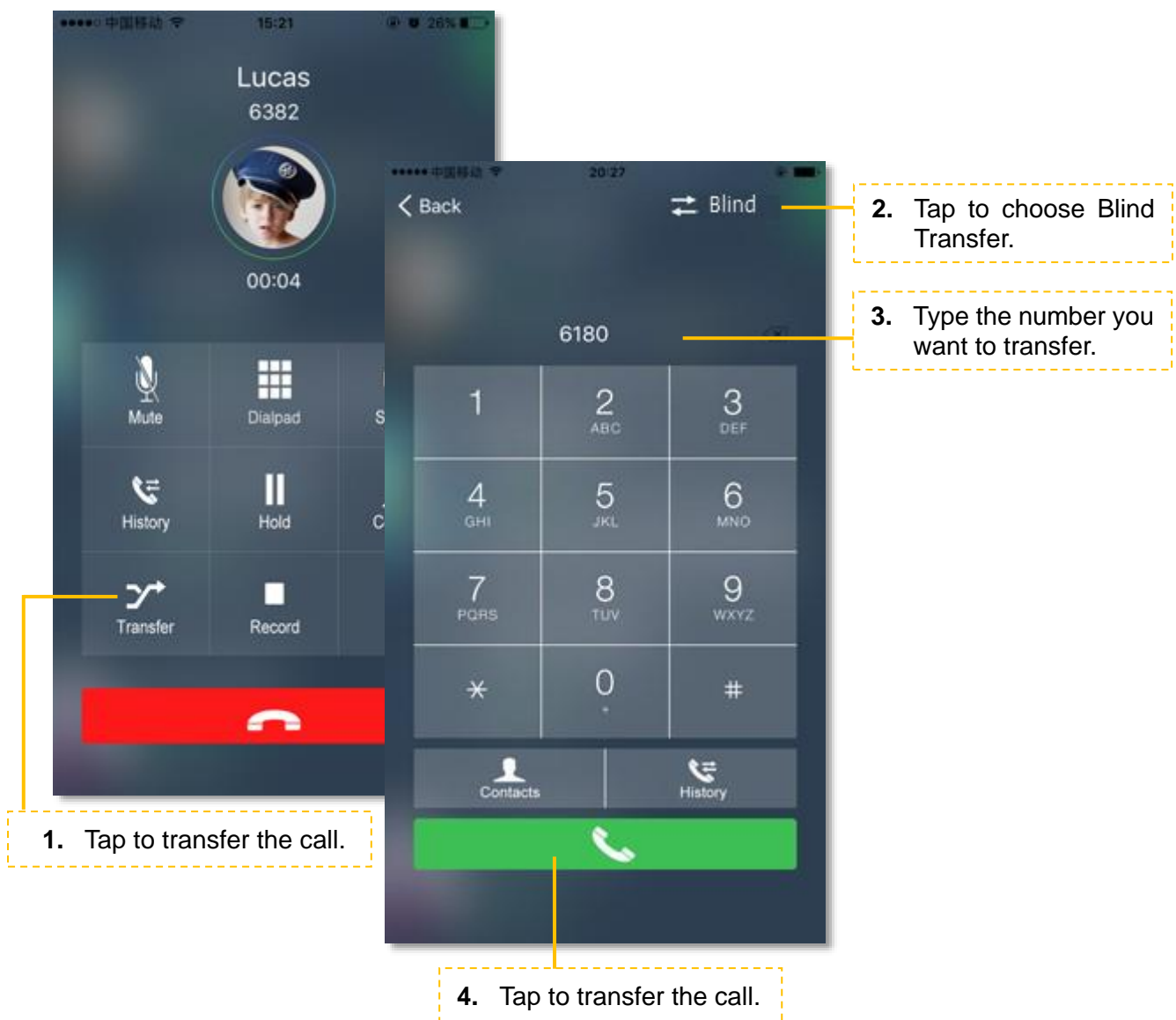


Blind Transfer

Tap  during the call, you can choose to make a blind transfer.

User A and User B are on the phone, User B on Linkus wants to transfer the call the User C.

1. Tap , the screen will be switched to the Transfer Screen.
2. Switch the transfer type to “Blind”.
3. Input User C’s number on the screen then tap  to call User C.
4. The call between A and C is established immediately.



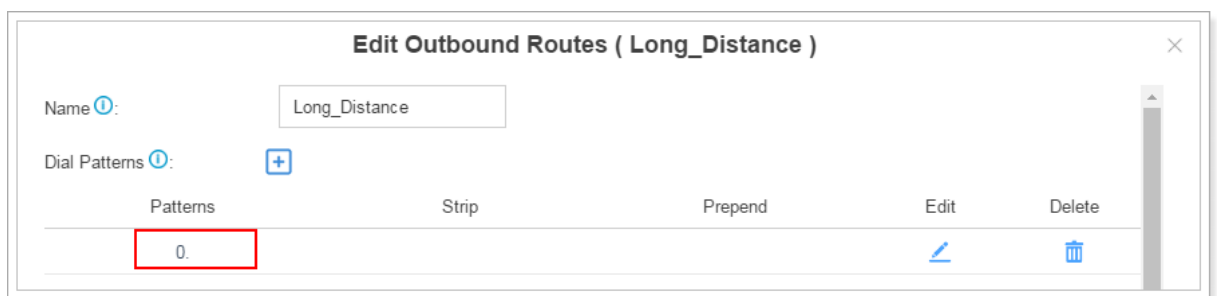
Number Rewriting



Number rewriting is a feature that allows you to manipulate the numbers dialed from Linkus. With number rewriting feature, you can utilize your native contacts or call history numbers without having to add new entries.

We have an example to show you how to use number rewriting feature. You could check the steps below.

Step1 Create an outbound route for adding prefix digits propose.

For example, we need to add digit 0 before the long-distance mobile phone numbers; so we need to create an outbound route and set the patterns as “0.” (do not forget the dot).




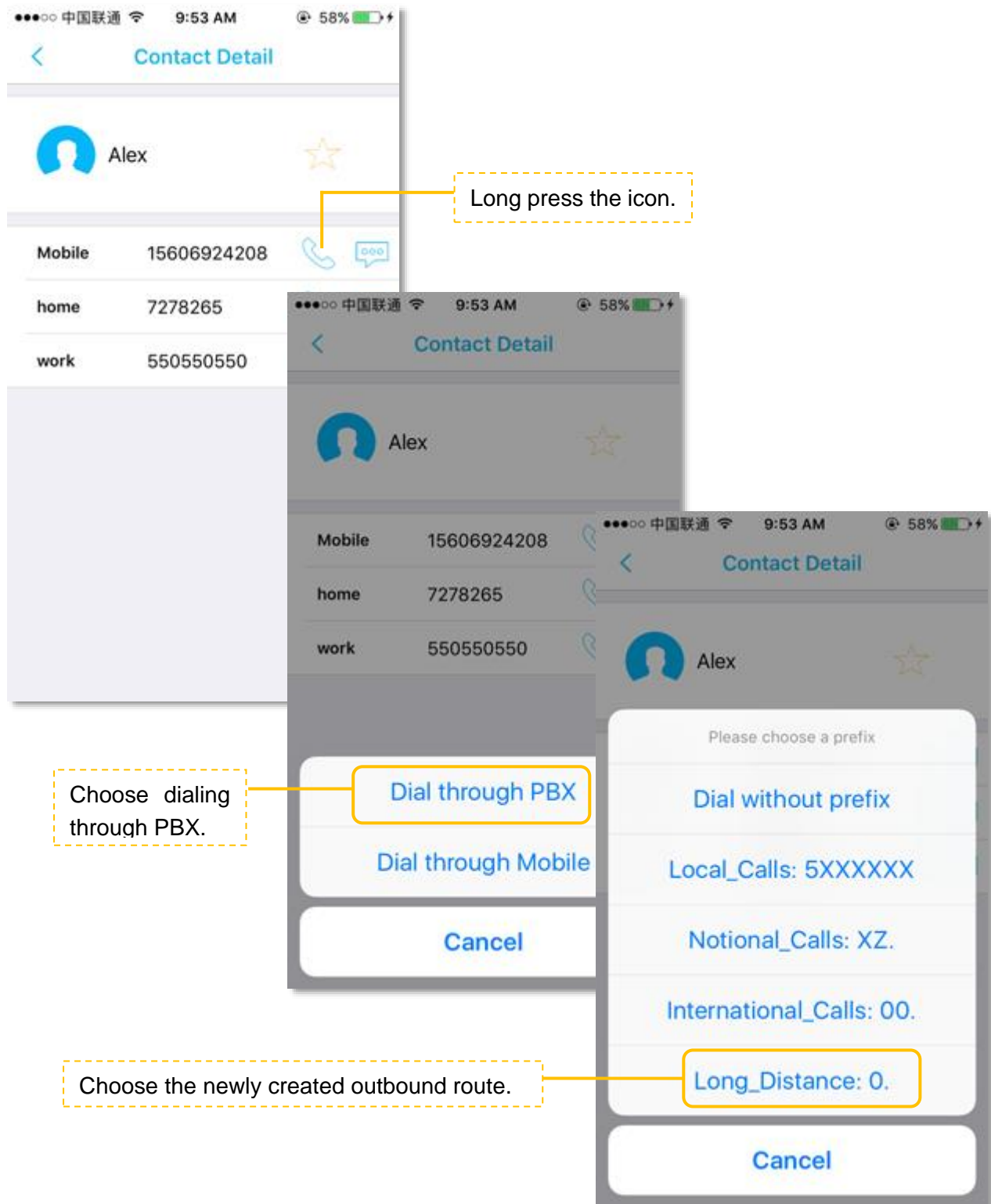
Patterns	Strip	Prepend	Edit	Delete
0.				

Step2 Choose the outbound route on Linkus to call out.

The system will automatically add prefix 0 and match an available outbound route to call out.

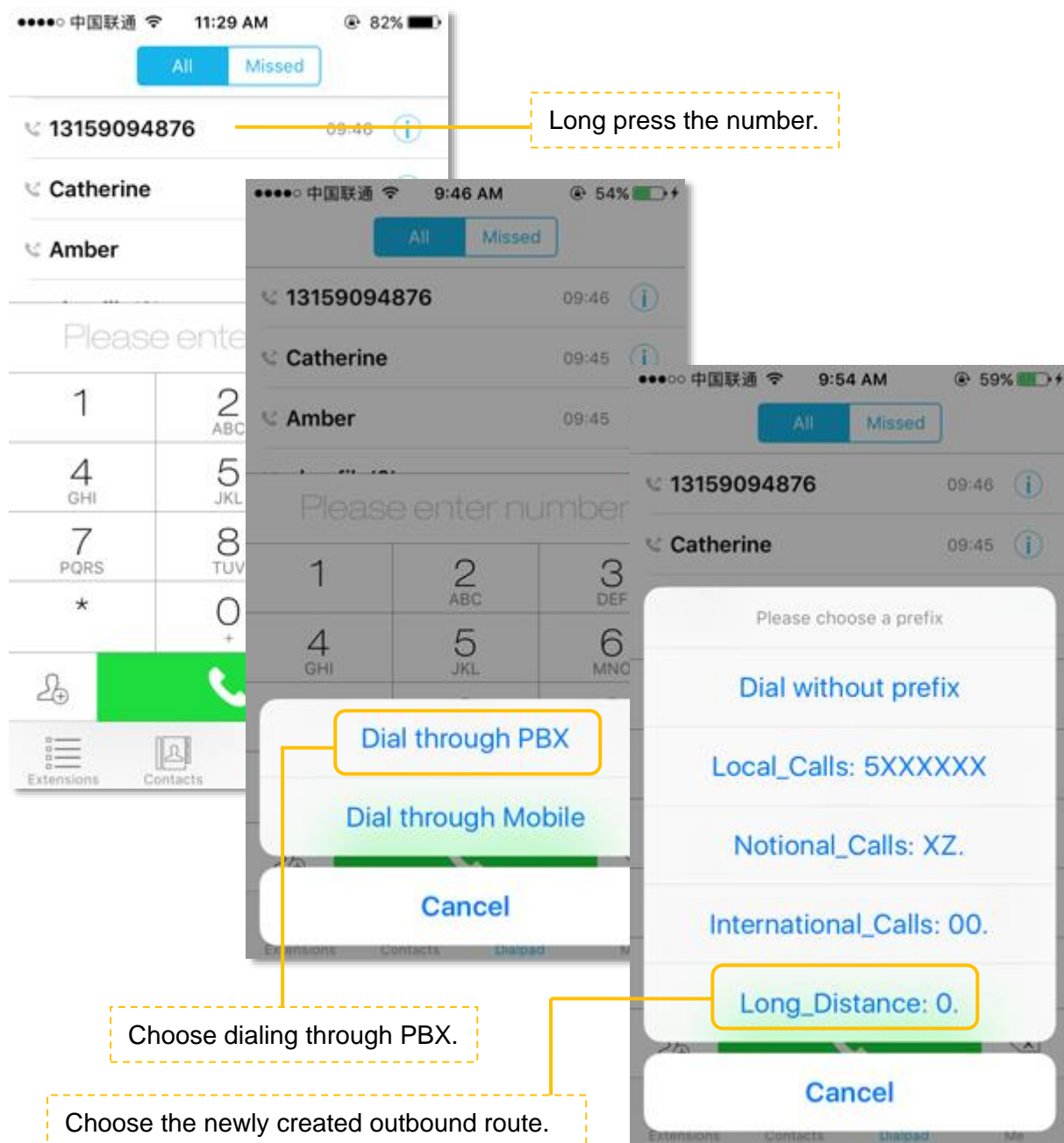
◆ Call From Contact Numbers

Long press the icon , choose calling through PBX, and choose the outbound route we created in step 1, the system will add prefix 0 automatically and call out.





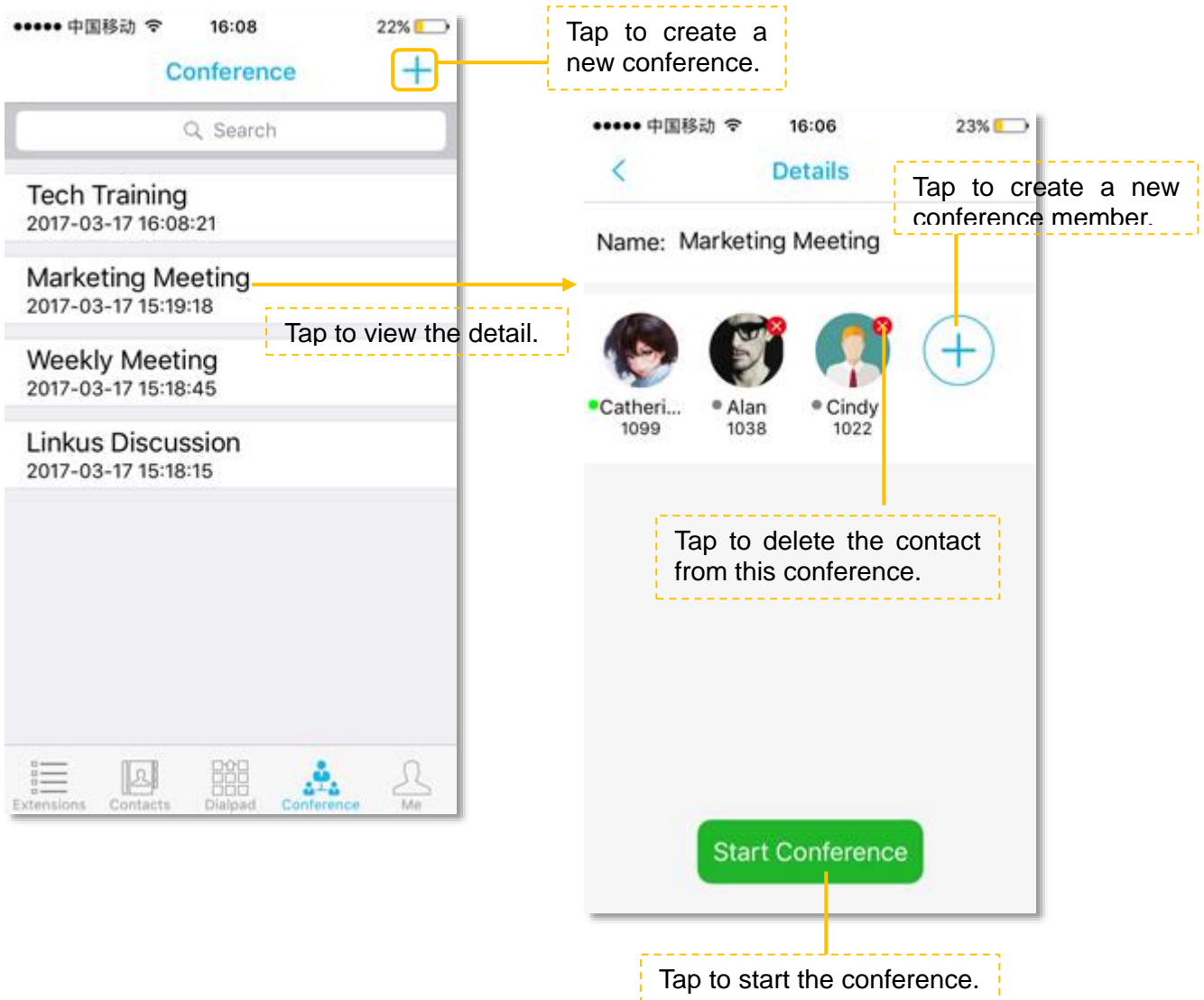
◆ Call From Call History Numbers

Long press the number, choose dialing through PBX, and choose the outbound route we created in step 1, the system will add prefix 0 automatically and call out.





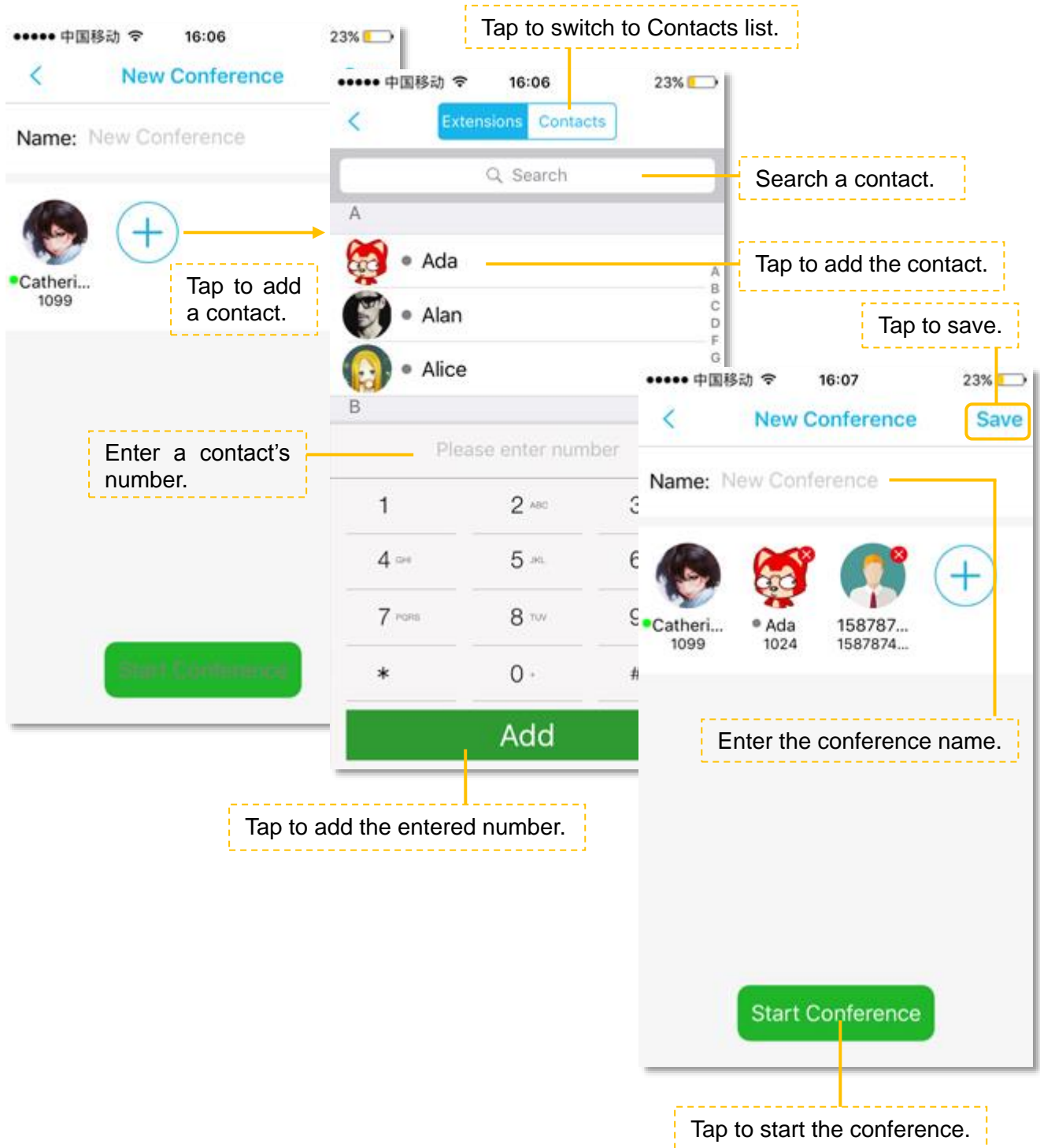
CONFERENCE

Linkus client supports up to 9-way conferencing. Tap  on the bottom of the screen to enter the conference list. Tap  to add a new conference, or choose and tap an existing conference.



Adding a New Conference

Tap , and tap  to add a new conference.





During a Conference


When the conference is established, the conference administrator can manage the conference:

- Re-invite contact to the conference
- Mute/unmute the conference members
- Delete the conference members
- End the conference

Conference Member Status

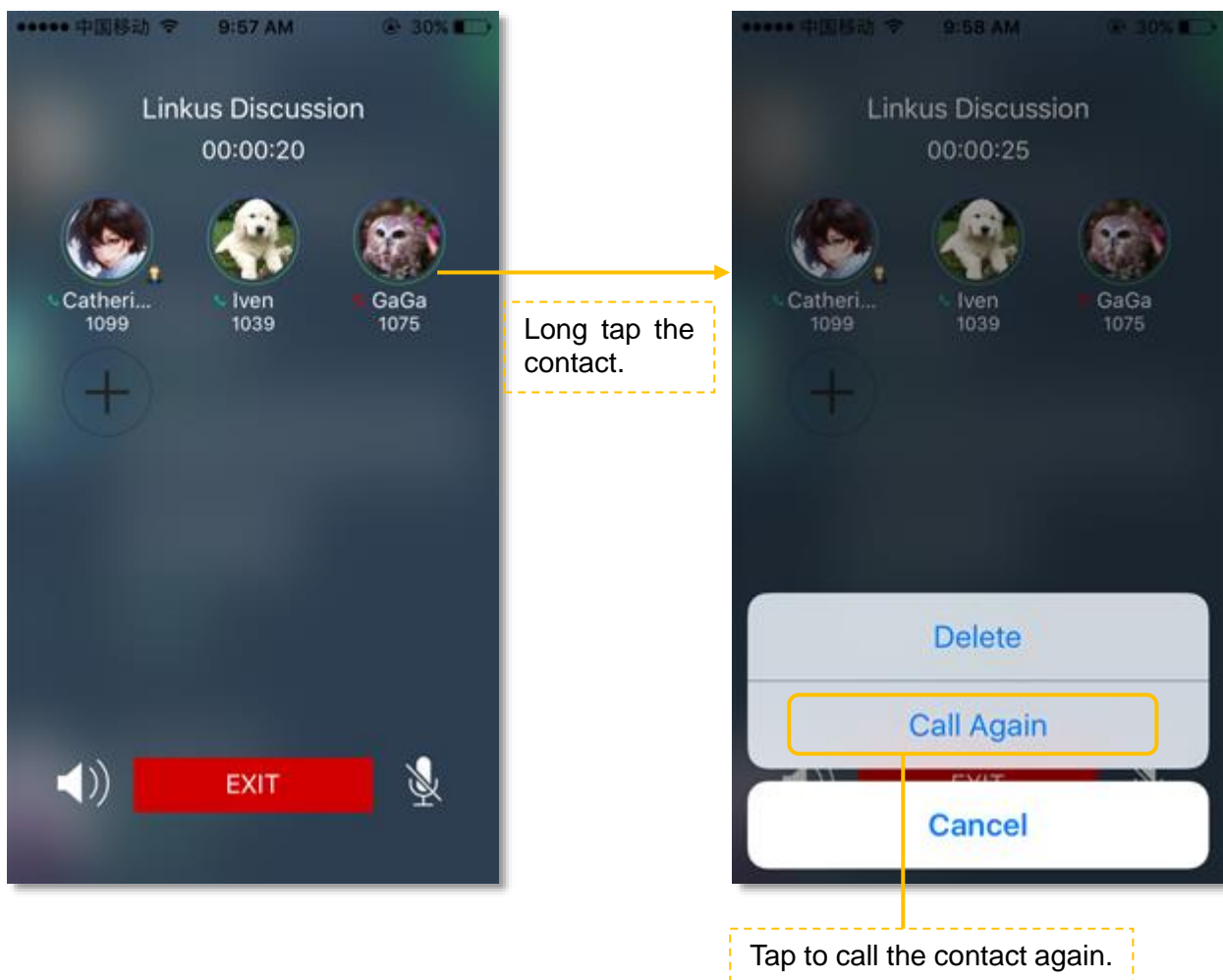
: The member answered the conference call.

: The member's phone is ringing.

: The member didn't answer the conference call or the member lost the connection.

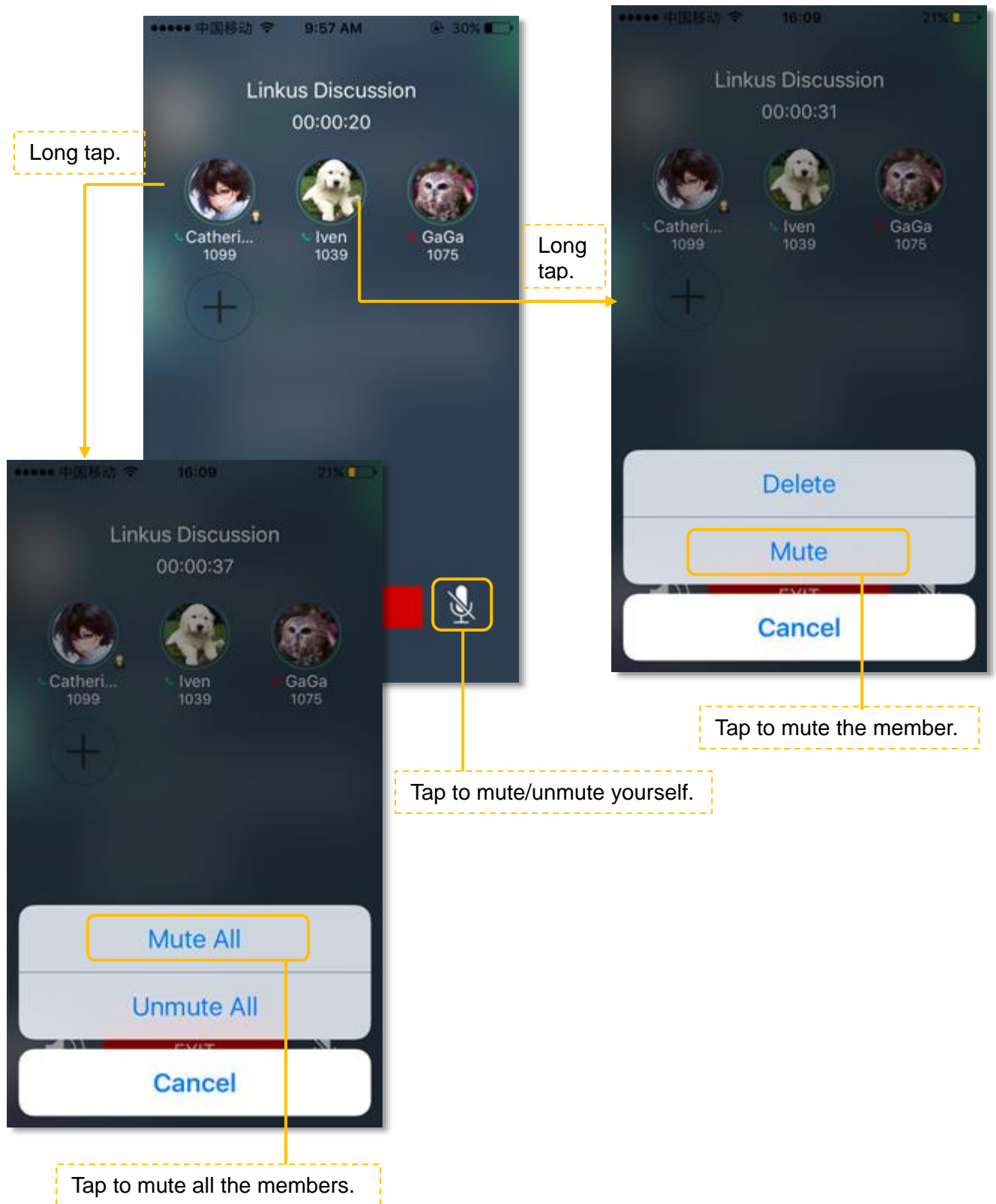
Re-inviting a Contact

The conference administrator can re-invite a contact if the contact didn't answer the conference call or if the contact lost connection.

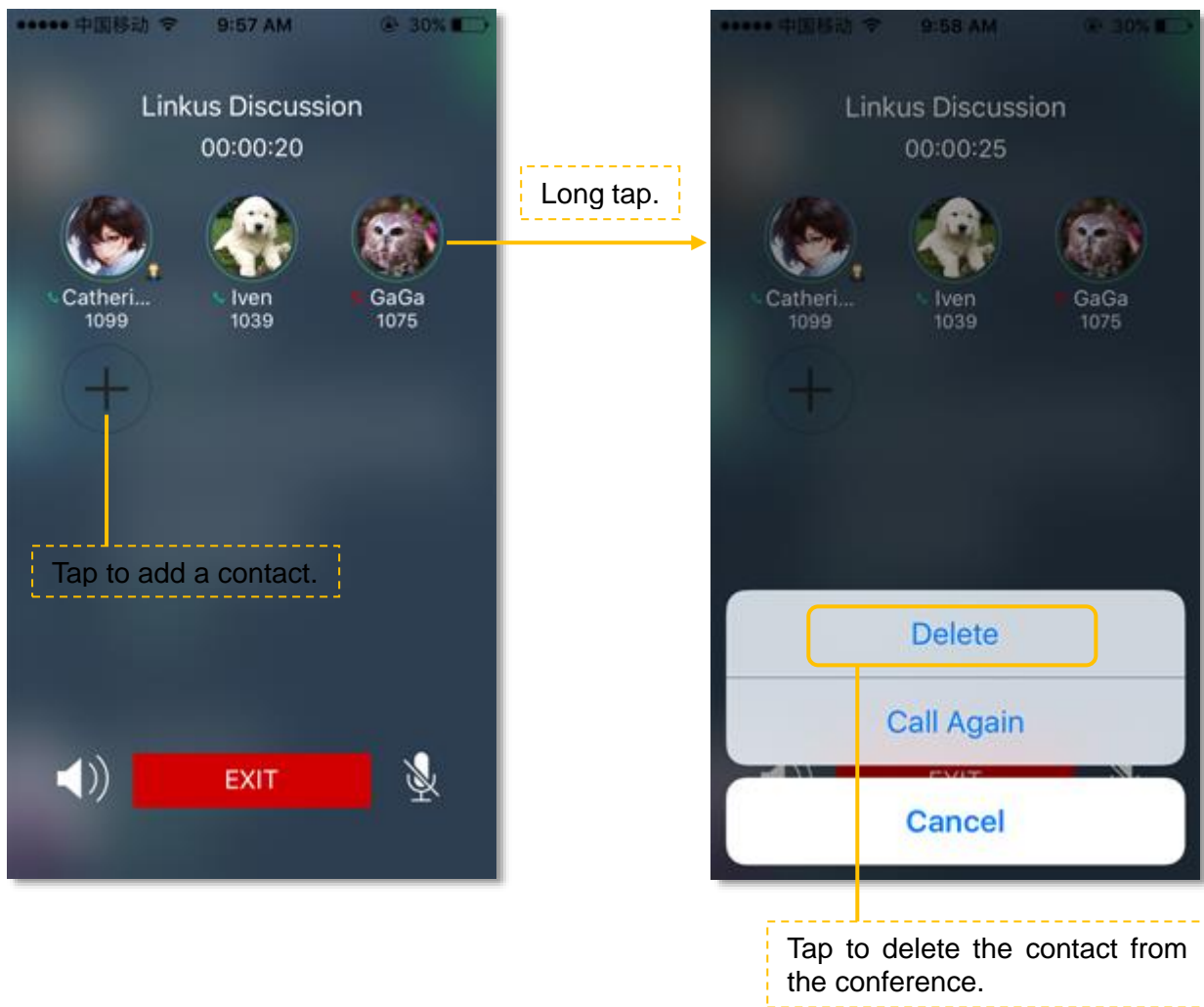


Muting/Unmuting Contacts

The conference administrator can mute or unmute the conference members.

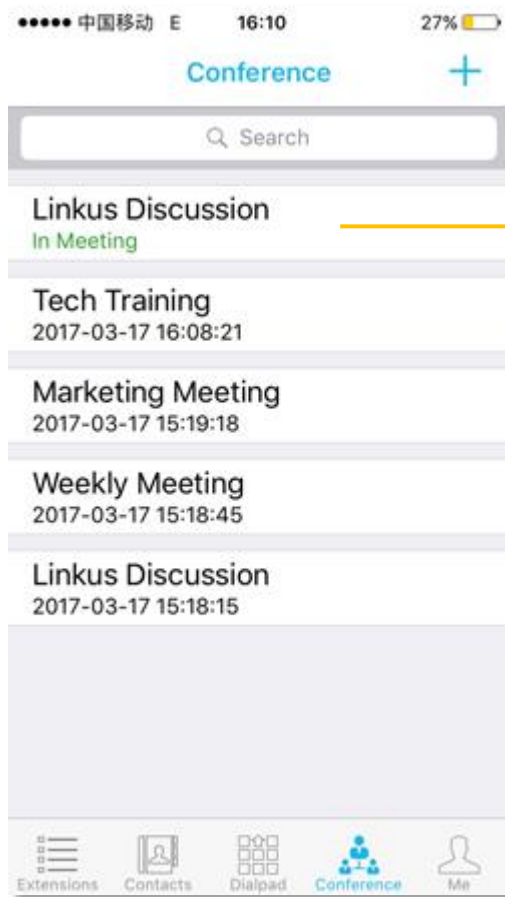


Adding/Deleting a Contact



Resuming a Conference

During a conference, if the members have lost connection, the administrator could re-invite them to the conference; if the administrator lost connection of an on-going conference, the conference would be continued, and the administrator could resume the conference.



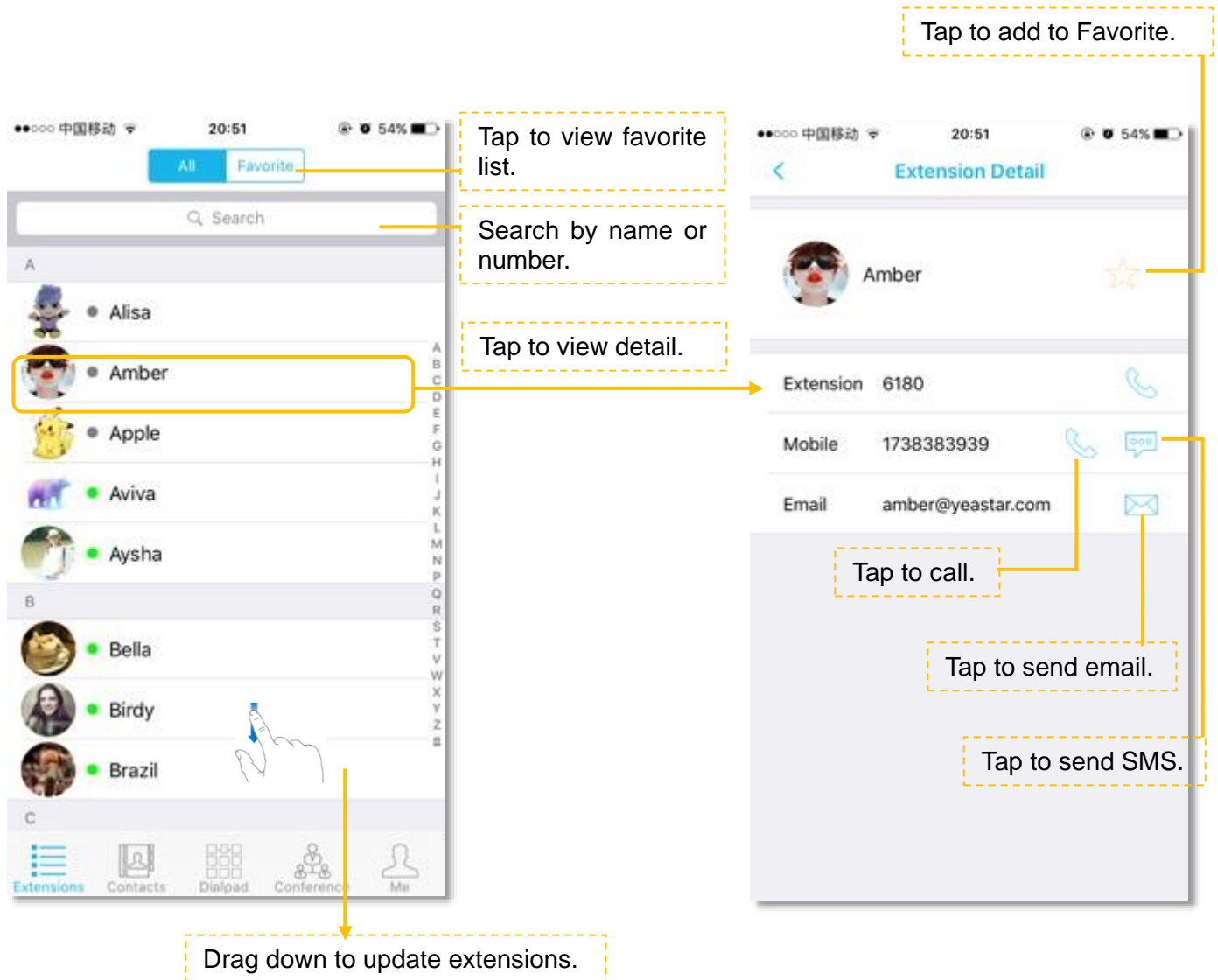
Tap to join the on-going conference.

CONTACTS

Linkus provides two phonebooks, **Extensions** and **Contacts**.

- **Extensions:** all the S-Series extensions are displayed on the Extensions page.
- **Contacts:** Contacts on Linkus are continually synchronized with your native contacts.

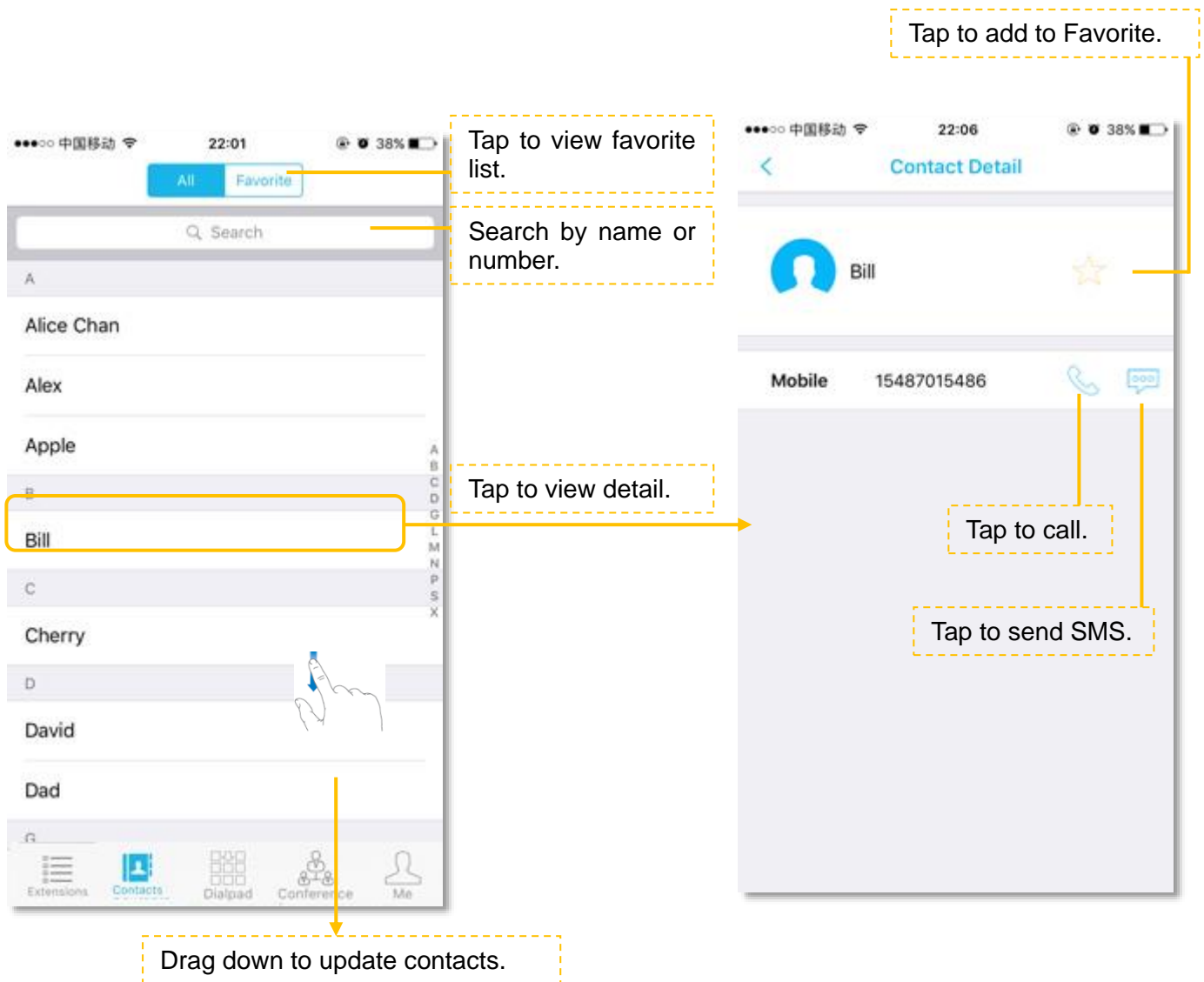
Extensions





Extension Status

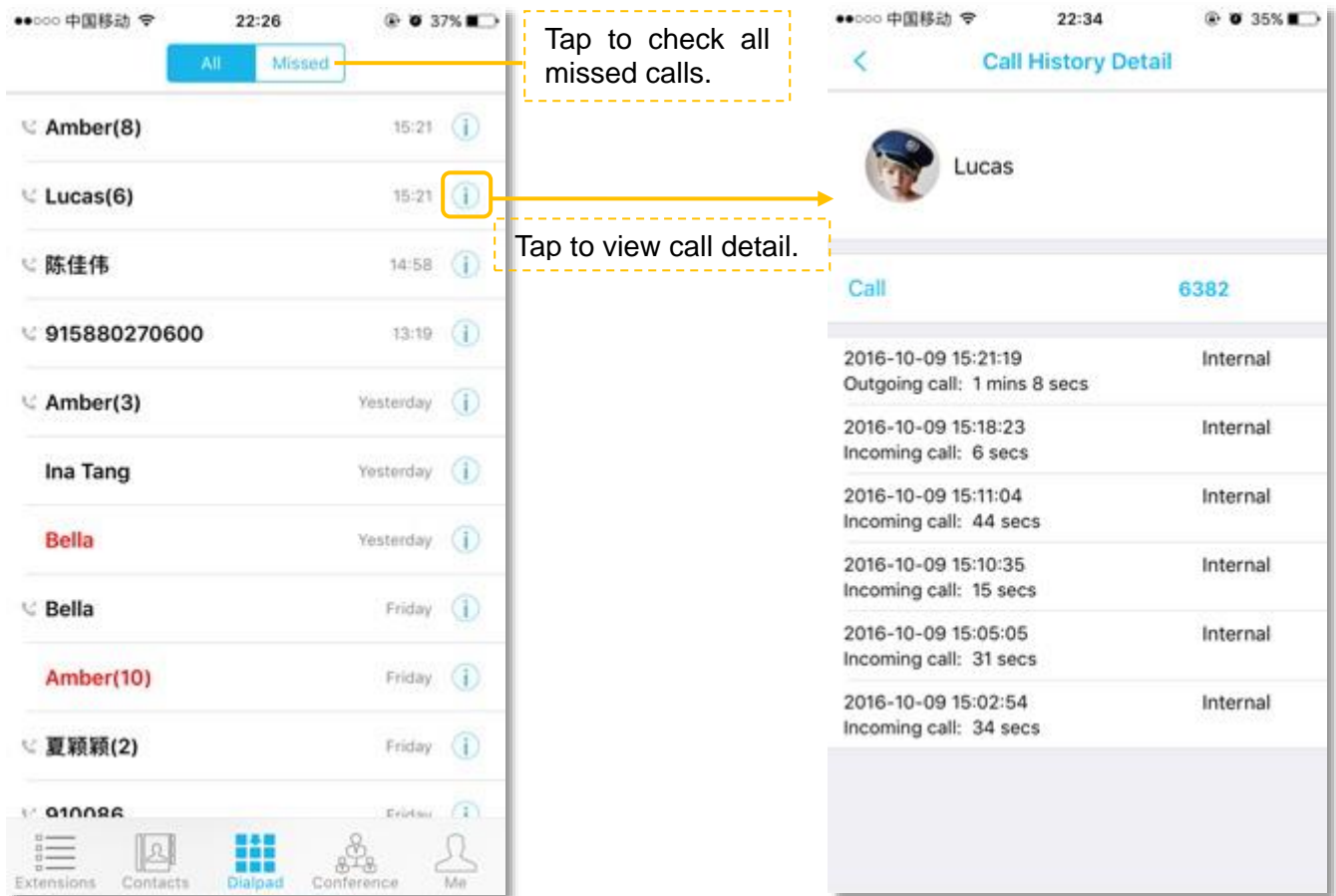
- The user is logged in Linkus.
- The user is logged in Linkus and busy in a call.
- The user is not logged in Linkus.

Contacts



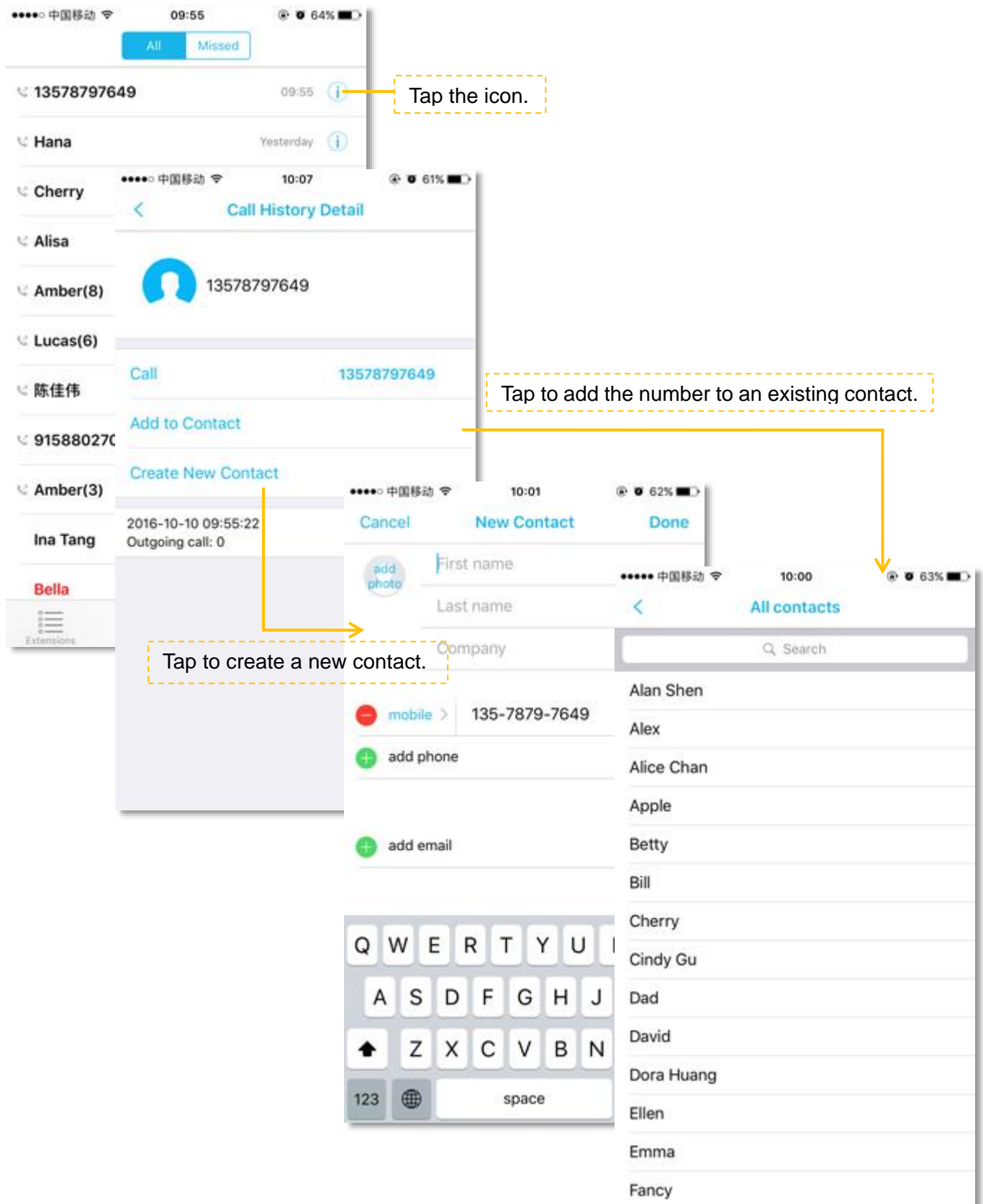
CALL HISTORY

Tap  at the bottom of the screen, a dial pad shows up and displays all the call history and missed calls. Tap  to hide the dial pad, then you can check all the call history.






Creating a Contact from History

You can create a contact from a history item.




VOICEMAIL & RECORDING

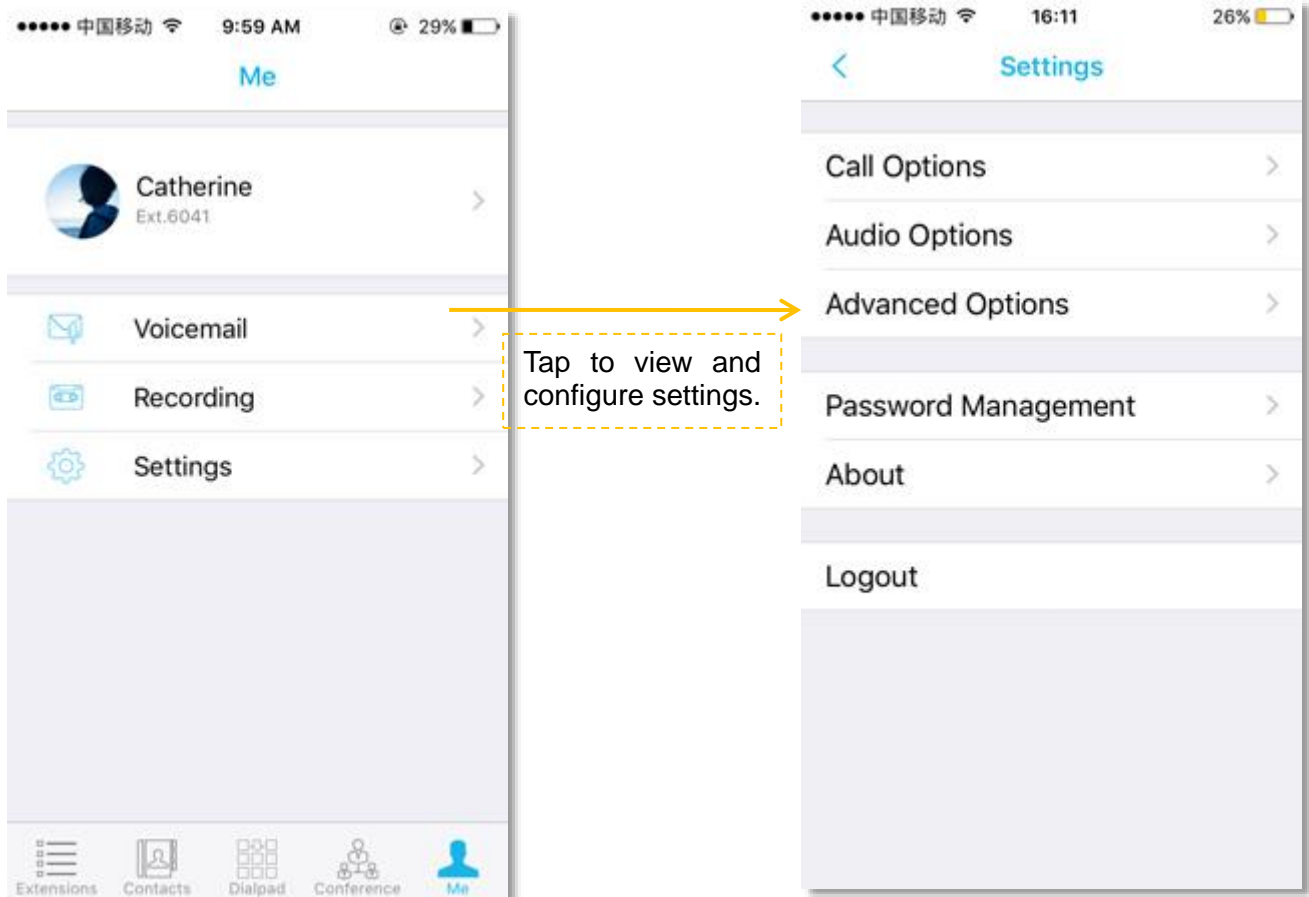
Linkus users could check their voicemail files and recording files on Linkus client. Tap  on the bottom of the screen, and tap **Recording** to check the recording files, tap **Voicemail** to check the voicemail files.

- Click  to download the recording/voicemail file.
- Click  to listen to the recording/voicemail.



SETTINGS

For the first time using Linkus, please tap  on the bottom of the screen, and go to configure the Linkus.



Call Options

1) Ring Strategy

Set the ring strategy for your office phone (where your extension is registered) and Linkus.

- **Ring Simultaneously:** the office phone and Linkus will ring simultaneously.
- **Ring Extension Only:** only the office phone will ring.
- **Ring Linkus Only:** only the Linkus will ring.
- **Ring Extension First:** the office phone rings first, then the Linkus rings.
- **Ring Linkus First:** the Linkus rings first, then the office phone rings.

2) Call Forwarding

Calls can be forwarded in any of these 3 conditions, choose one condition and choose the forward destination.

- **Always:** always forward the call, never rings the user.
- **No Answer:** only call forward when the user does not answer.
- **When Busy:** only call forward when the user is in a call.

3) Ring Timeout

Set the ring timeout in seconds, phone will stop ringing after the time defined.

4) DND

If DND is enabled, the user could not receive any calls.

Audio Options

1) Echo Cancellation

If there is an echo during the call, enable this feature to get better sound quality.

2) Dial Pad Tones

Enable or disable dial pad tones.

Advanced Options

1) Clear Cache

Tap this setting to clear downloaded recording files on your mobile phone.

2) Background Mode

Keep running Linkus in the background to answer calls from Linkus promptly. If enabled, it will increase power consumption.

3) Debug

By default, Linkus debug is disabled. If you got a problem of Linkus client, please follow the steps below to report your bugs to Yeastar:

- Enable **Report Bugs**.
- Duplicate the problem.
- Tap **Send Report**.
- Enter the description of your problem, click **OK**.
- Edit your Email contents, and click **Send**. The email will be sent to Yeastar.

Password Management

Change the Linkus login password. Enter the old password first, then enter new password twice to confirm. Tap **Save**, and log in Linkus using the new password.



KARAGIANNIS[®]
security systems